

# Westchester County Voice Radio System Replacement

Westchester  
gov.com

George S. Latimer  
County Executive

Richard G. Wishnie  
DES Commissioner

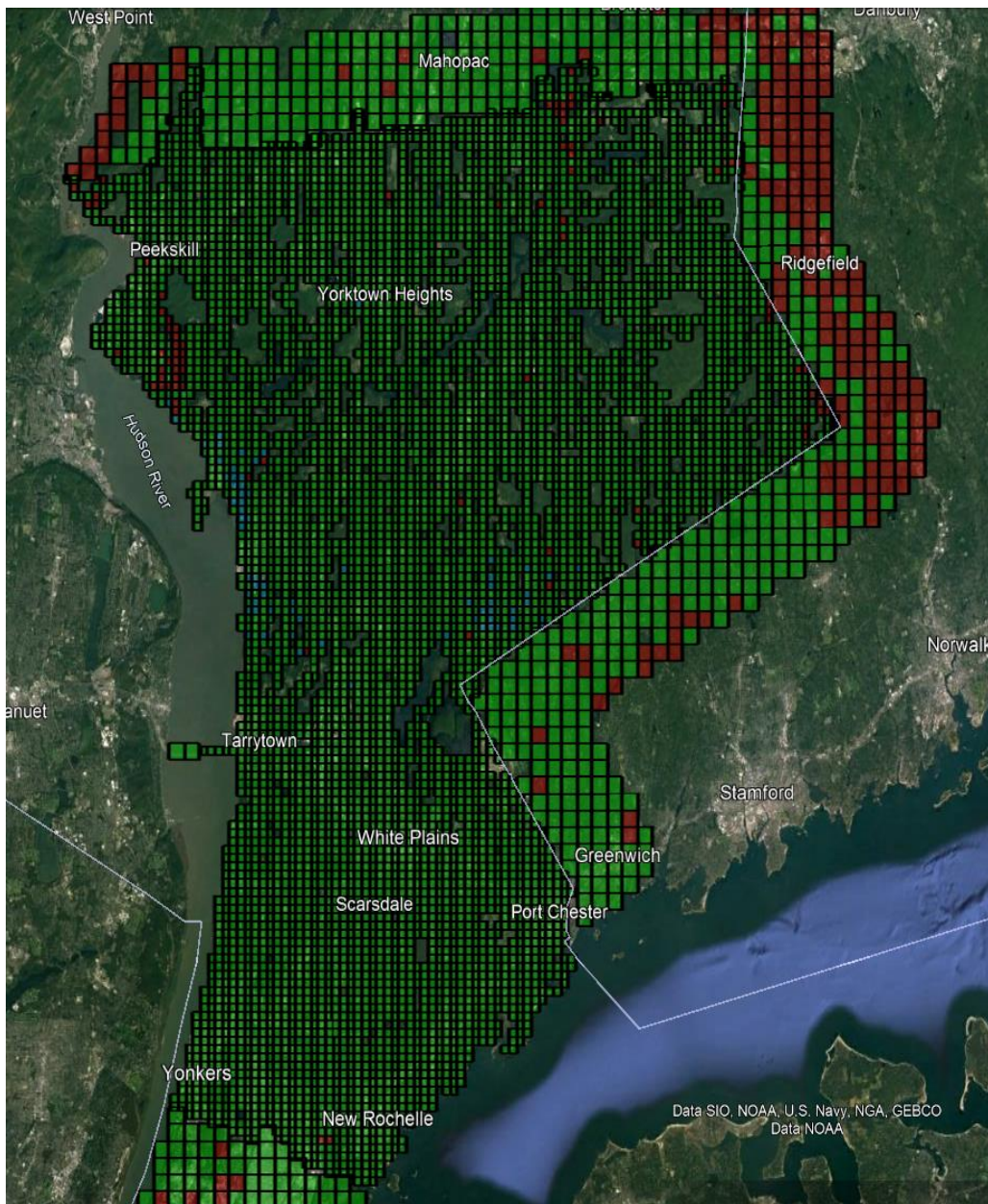
## Voice Radio System Replacement Project (Phase I & II)

- Installs Nearly Completed: ~ 10% remaining
- All Radio Agreements Complete.
- “Go Live” planned by end of year. (2021)
  - Weekday morning switch – request an agency rep to assist.
- Pager coverage testing started (north), south to follow post “Go Live”. Pager “Go Live” in early 2022.
- Final subscriber programming in future.

# Radio System Drive Testing

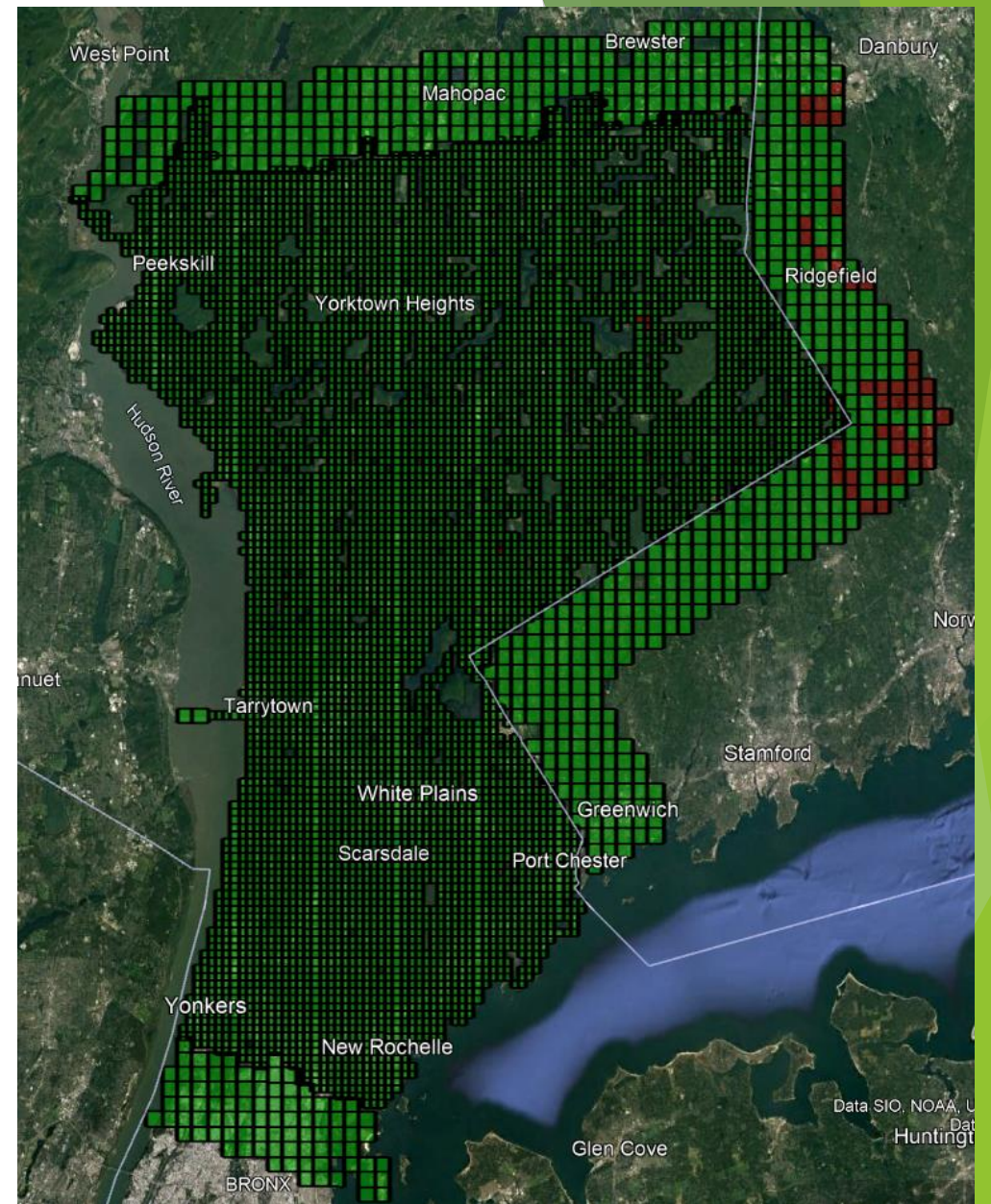






**BIT Error Rate 98.7% (BER)**

D  
R  
I  
V  
E  
  
T  
E  
S  
T

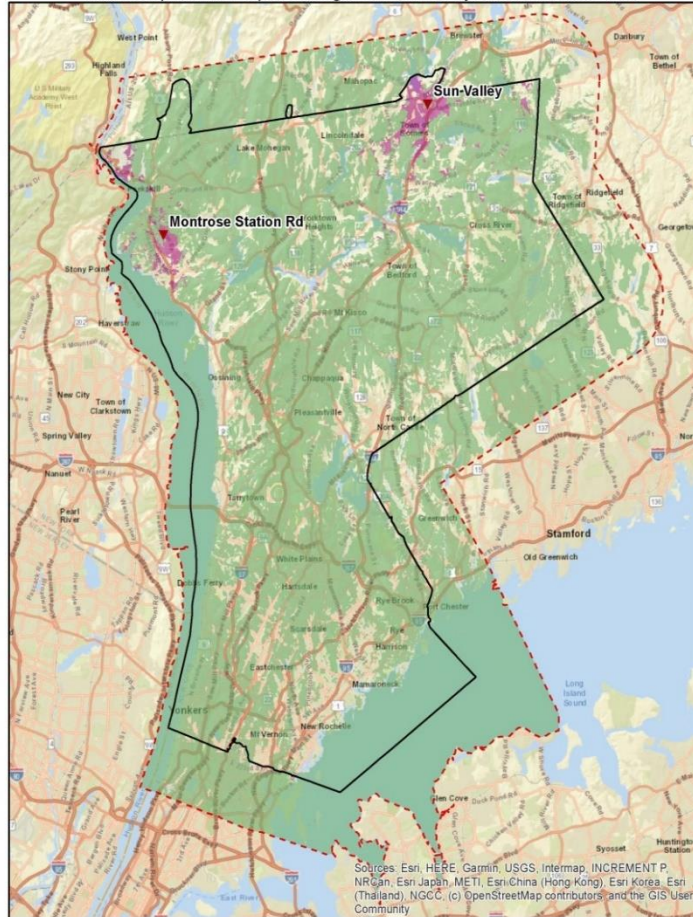


**Delivered Audio Quality 99.2% (DAQ)**



# Radio System Coverage

**Predicted Trunked System In-Building Coverage**  
After Completion of Proposed Stage 1& 2 Sun Valley Dr and Montrose Sites



**UNOFFICIAL  
PRELIMINARY  
COUNTY-PRODUCED**

1 : 325,000 scale  
2021-09-13, KWH  
Green Coverage Layer by Motorola Maps Team, 2021-06-10  
Pink Coverage Layer projected by DoIT, 2021-09-01

In-building coverage maps:  
(Phase II)

Gaps:

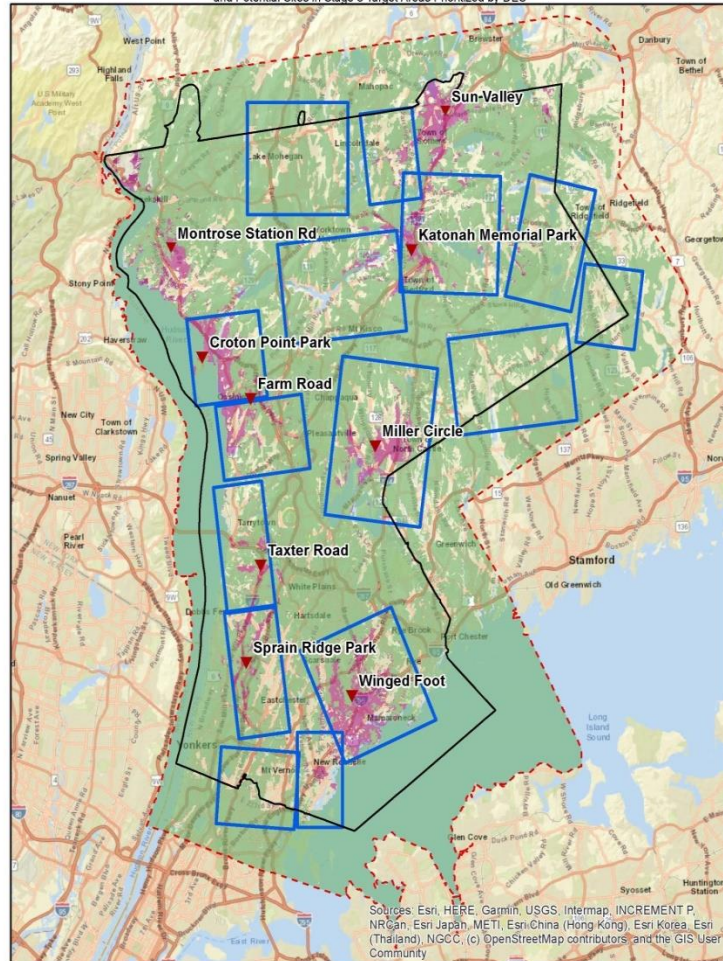
- North Salem (Sun Valley)
- Croton (Montrose VA / other)

Working on site selection for  
Phase II in the needed areas.

# Radio System Coverage

## Predicted Trunked System In-Building Coverage

After Completion of Proposed Stage 1 & 2 Sun Valley Dr and Montrose Sites  
and Potential Sites in Stage 3 Target Areas Prioritized by DES



- County Coverage Buffer
- Service Boundary
- DoIT Predicted Coverage
- Candidate Stage 3 Coverage Target Areas

(6 additional sites planned for first year of Stage 3.  
More than six sites shown to mitigate acquisition delays and  
provide options.)

**UNOFFICIAL  
PRELIMINARY  
COUNTY-PRODUCED**

1 : 325,000 scale  
2021-09-13, KWH  
Green Coverage Layer by Motorola Maps Team, 2021-06-10  
Pink Coverage Layer projected by DoIT, 2021-09-01

In-building coverage maps  
(Phase III) gaps

Prioritize build in outlined areas.

Will continue site builds once  
funding is allocated in the  
future.



# Guard Hill Tower & Shelter





# Winged Foot – Temp setup for Paging



F  
U  
T  
U  
R  
E  
S  
I  
T  
E  
T  
R  
U  
N  
K



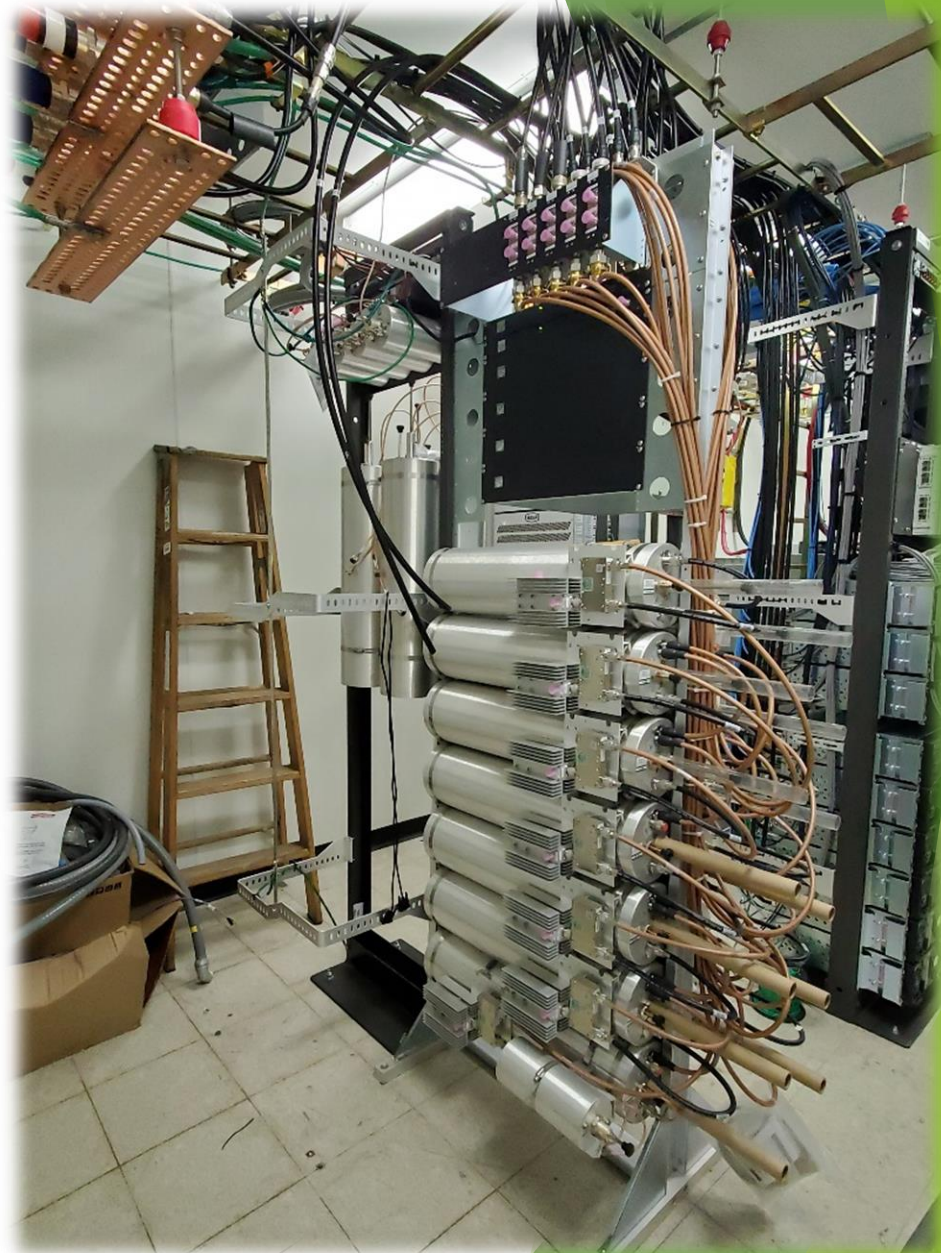
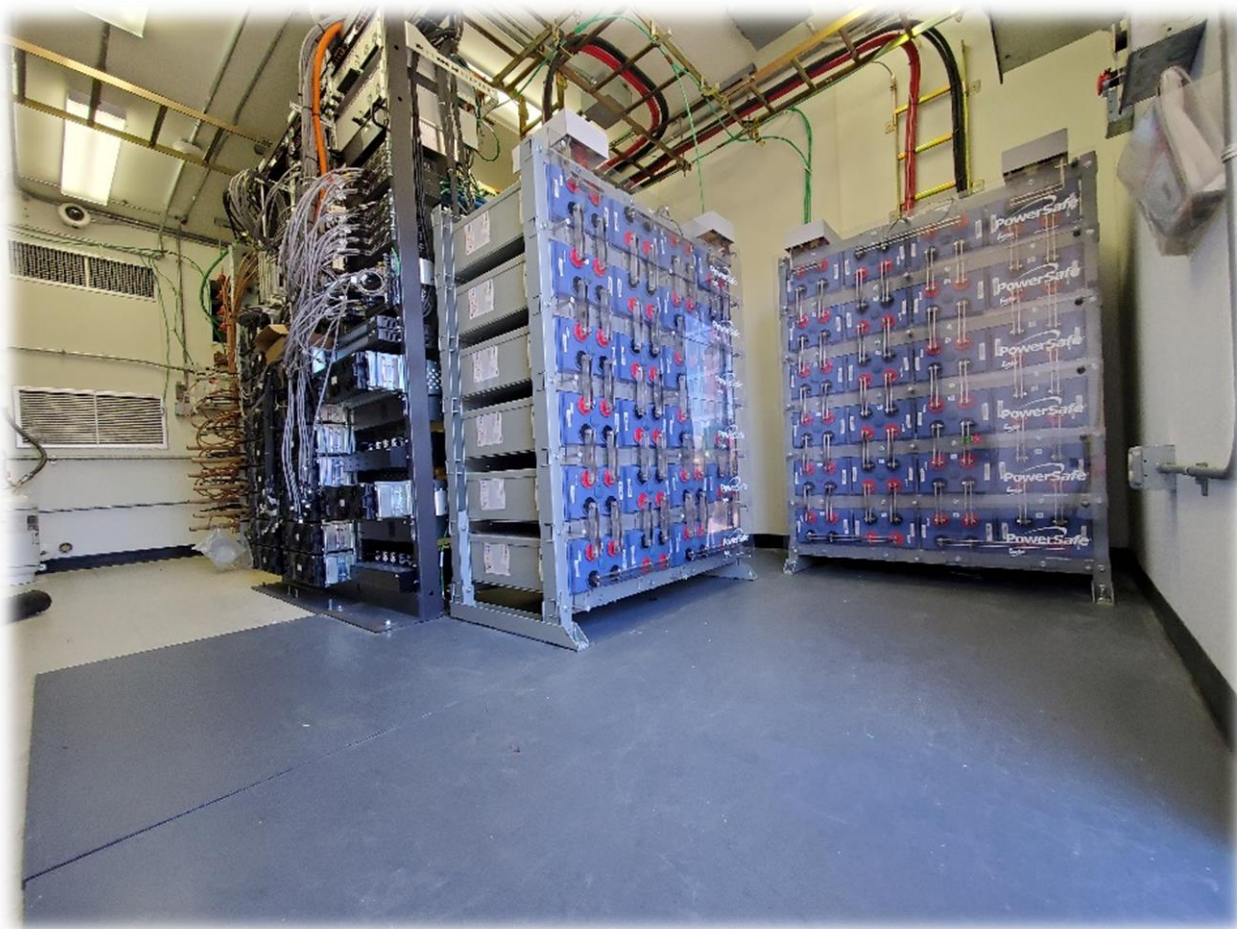


# WHUD – (Putnam Valley) / Mohansic





# Grasslands Shelter





# Other Work

## Portable Case Replacement:

- Vendors to swap cases with new ones.

## Radio Interference:

- Trunk vs. Conventional (Maintain subscriber distance)
- Switch to opposite hip or alternate location.

## Intrinsically Safe:

- Portable are not intrinsically safe.
- System built as Command and Control.
- All accessories must be intrinsically safe.
  - Batteries are not interchangeable.

ARE ALL YOUR PERSONAL ELECTRONIC DEVICES  
INTRINSICALLY SAFE?

(Watches, Smart Devices, Pagers, Flashlights, Tools, etc.)

# Radio Position!

Wave interference.





# QUESTIONS?

Thank you!

Department of Information Technology (DoIT) – Radio Group

- Dedicated
- Committed
- Detailed
- Talented

They, can DoIT...